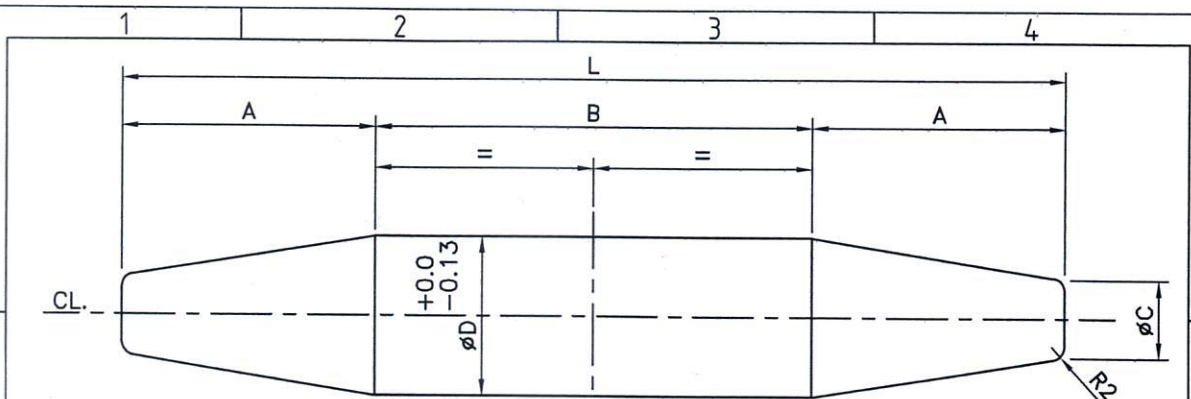


Technical Specification / Material Order List

Materials	Quantity	Unit	Specification
21.5 MM DIA X 104 MM LONG	500	Nos	Parallel Barrel Drift (Diameter: 21.5 mm & 23.5 mm) conforming to IRS M-4 (Class-IV) and IS: 1875, and as per Drawing No. 3144-ERC-SK-01
21.5 MM DIA X 121 MM LONG	450	Nos	
21.5 MM DIA X 130 MM LONG	300	Nos	
23.5 MM DIA X 113 MM LONG	1150	Nos	
23.5 MM DIA X 122 MM LONG	24675	Nos	
23.5 MM DIA X 128 MM LONG	7800	Nos	
23.5 MM DIA X 138 MM LONG	24625	Nos	
23.5 MM DIA X 150 MM LONG	7900	Nos	
23.5 MM DIA X 170 MM LONG	2600	Nos	
23.5 MM DIA X 176 MM LONG	8250	Nos	
23.5 MM DIA X 196 MM LONG	550	Nos	



PARALLEL BARREL DRIFT
GRADE: IRS M4 CLASS- IV

TYPE	NOMINAL DIA. (MM)	Ø D (MM)	DIMENSION OF DRIFT				GRIP (MM)	NOS. REQUIRED 5 Nos SPAN
			A (MM)	B (MM)	ØC(MM)	L (MM)		
1	20	21.5	32	40	11	104	10 TO 18	500
2	20	21.5	32	57	11	121	20 TO 35	450
3	20	21.5	32	67	11	130	36 TO 45	300
							TOTAL NOS.=	1250
4	22	23.5	35	43	12	113	10 TO 19	1150
5	22	23.5	35	52	12	122	20 TO 28	24675
6	22	23.5	35	58	12	128	29 TO 35	7800
7	22	23.5	35	68	12	138	36 TO 44	24625
8	22	23.5	35	80	12	150	45 TO 56	7900
9	22	23.5	35	100	12	170	60 TO 76	2600
10	22	23.5	35	106	12	176	77 TO 82	8250
11	22	23.5	35	126	12	196	95 TO 102	550
							TOTAL NOS.=	77550

NOTE:-

- ALL DIMENSIONS ARE IN mm.
- ALL DRIFTS GRADE IRS M4 CLASS-IV.IS:1875.

Chatterjee
M(P)/BBJ.



THE BRAITHWAITE BURN & JESSOP CONSTRUCTION COMPANY LIMITED, KOLKATA
(A Govt. of India Enterprise)

CLIENT: **NORTH EASTERN RAILWAY**

PROJECT: 25 Ton. AXLE LOADING STANDARD-2008, OPEN WEB WELDED THROUGH TYPE GIRDER FOR BR.NO.-50 (14x61.0M) SPAN FOR BETWEEN PANIAHWA-VALMIKINAGAR DOUBLING, BR.NO 16 (18x61.0M) BETWEEN MANJHI-BAKULAHA STATION OF CPR-BUI DOUBLING, BR.NO 391 (17x61.0M) BETWEEN CHOWKA GHAT- GHAGHRA GHAT OF BUG-GD 4TH LINE PROJECT.

TITLE: **REQUIREMENT OF DRIFT (FOR 61.0 M. SPAN)**

SCALE:-NTS	NAME	DATE	B.B.J. ORDER NO.- 3144	
DRAWN BY:	S.S CHATTERJEE	13.02.2026	DRG. NO.	REV.
CHECKED BY:			3144-ERC-SK-01	0
APPROVED BY:			REQN.NO.-	DATE:
				A4