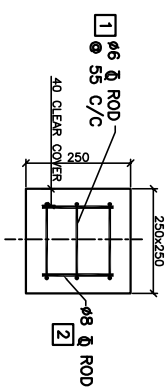


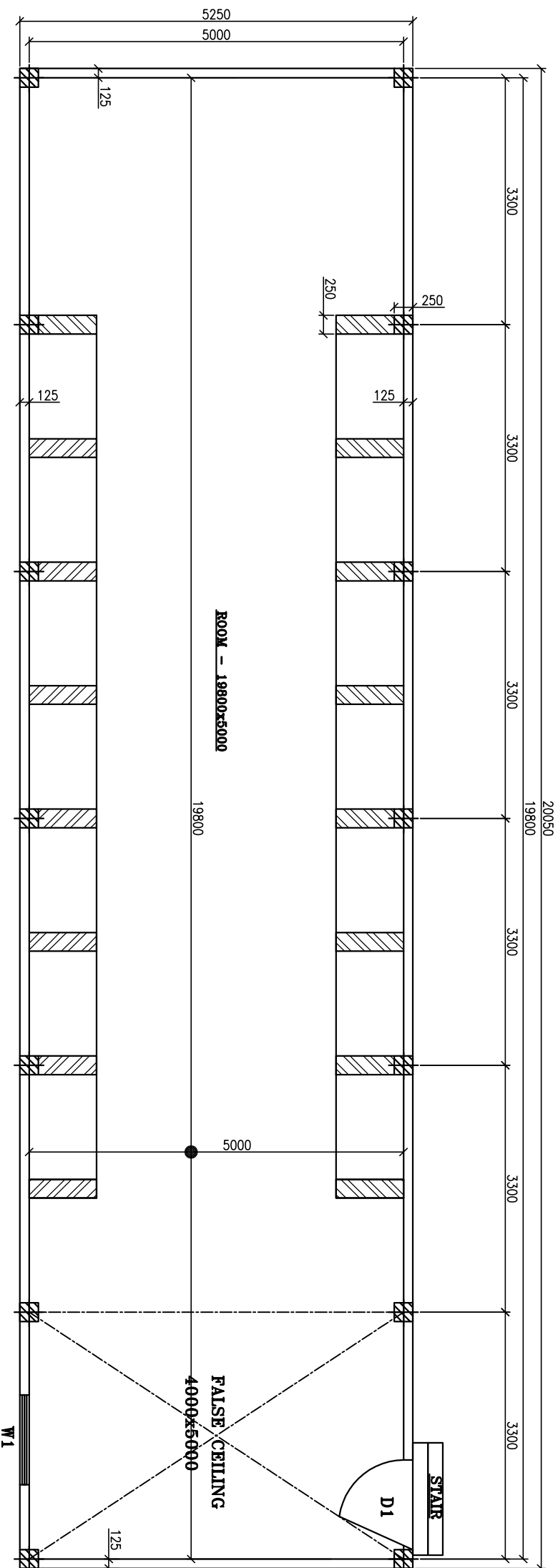
SECTION AT COLUMNS OF STORE

SECTION AT COLUMNS OF STORE

BAR LAYOUT FOR 250 LG. R.C.C



BAR MNO.	SIZE	BAR	A	B	C	LENGTH NOS.	UNIT WT.	WEIGHT
1	8 1/2	B	195	170	--	705	42	0.22
2	8 1/2	A	--	--	170	56	0.40	3.8 Kg.
ACTUAL TOTAL QUANTITY=								10.3 Kg.

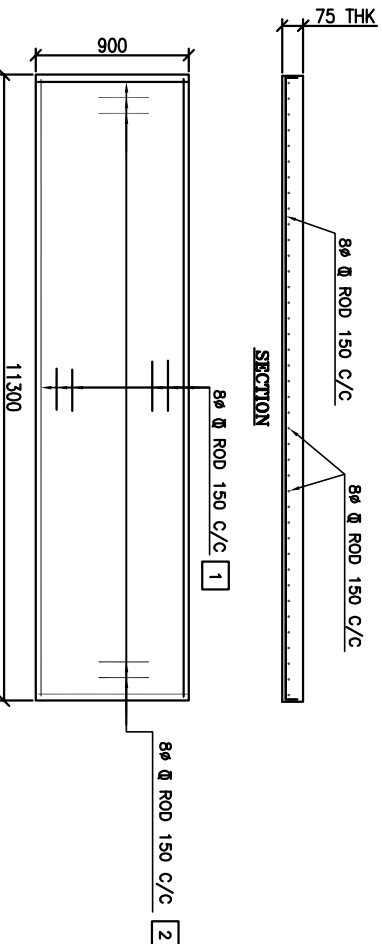


PLAN OF STORE

BOQ FOR STORE

1. WINDOW SIZE W1 (WITH TOWER BOLT)	= 1200 x 1200 x 2 NOS.
2. 22 SWG. C.G.I. SHEET FOR ROOF SIZE 2'-8" x 10' LG. = 75 NOS. (EXTRA 7 NOS.)	= 1200 x 2000 x 1 NO.
3. BRICK WORK FOR WALL (125mm)	= 108.0 SQM (APPR.)
4. BRICK WORK FOR FOUNDATION OF WALL (125mm)	= 11.0 CUM (APPR.)
5. B.F.S WORK 75mm. FOR FOUNDATION OF WALL (125mm)	= 28.0 SQM (APPR.)
6. BRICK WORK FOR COLUMN (14 NOS.) (250mm)	= 5.4 CUM (APPR.)
7. R.C.C WORK FOR COLUMN (14 NOS.) (250mm)	= 0.2 CUM (APPR.)
8. B.F.S WORK 75mm. FOR COLUMN FOUNDATION (18 NOS.) (250mm)	= 8.0 SQM (APPR.)
9. FLOOR	
A) EARTH FILLING	= 15.0 CUM (APPR.)
B) BRICK FLAT SOLING 75mm.	= 99.0 SQM (APPR.)
C) P.C.C (6mm DOWN)	= 2.5 CUM (APPR.)
D) NET CEMENT WORK	= 99.0 SQM (APPR.)
10. TOTAL QUANTITY OF 8 1/2 ROD (WITH 5% EXTRA)	= 6.8 KG (APPR.)
11. TOTAL QUANTITY OF 50 NB. M.S PIPE (MEDIUM) (WITH 5% EXTRA)	= 4.0 KG (APPR.)
12. TOTAL QUANTITY OF 40 NB. M.S PIPE (MEDIUM) (WITH 5% EXTRA)	= 0.2 MT (APPR.)
13. TOTAL QUANTITY OF 40 NB. M.S PIPE (MEDIUM) (WITH 5% EXTRA)	= 0.4 MT (APPR.)
14. EXCAVATION WORK FOR FOUNDATION	= 35.1 CUM (APPR.)
15. BACK FILLING EARTH WORK FOR FOUNDATION	= 17.1 CUM (APPR.)
16. TOTAL AREA OF BUILDING	= 108.0 SQM (APPR.)
17. TOTAL SHUTTERING FOR R.C.C WORK	= 4.5 SQM (APPR.)
18. TOTAL ROOF AREA	= 120.0 SQM (APPR.)
19. AREA OF FALSE CEILING	= 20.0 SQM (APPR.)

BAR BENDING SCHEDULE FOR R.C.C SLAB								
BAR MNO.	SIZE	BAR	A	B	C	LENGTH NOS.	UNIT WT.	WEIGHT (APPR.)
1	8 1/2	B	A	B	--	11360	6	0.395
2	8 1/2	B	A	B	--	960	75	0.395
1 NO SLAB TOTAL QUANTITY=					437.40 Kg.			
6 NOS SLAB TOTAL QUANTITY=					2624.4 Kg.			
6 NOS SLAB TOTAL QUANTITY=					2.62 MT.			



DETAILS OF SLAB

TITLE:

DETAILS OF STORE ROOM

THE BRAITHWAITE BURN & JESSOP CONSTRUCTION CO. LTD.
KOLKATA
(A GOVT. OF INDIA INDIA ENTERPRISE)

PROJECT: **PROPOSED RAIL BRIDGE ACROSS RIVER GANGA AT**
ALLHABAD OF 24x76.2 M. SPAN GIRDER DOUBLE LINE

TITLE:

DETAILS OF STORE ROOM

DRAWN BY: R. BOSE 11.11.20 ORDER NO.: **3135**

CHECKED BY: SCALE: 1:50

APPROVED BY:

DRG. NO.- **3135-ERC-SITE-SK-10** REV. NO.