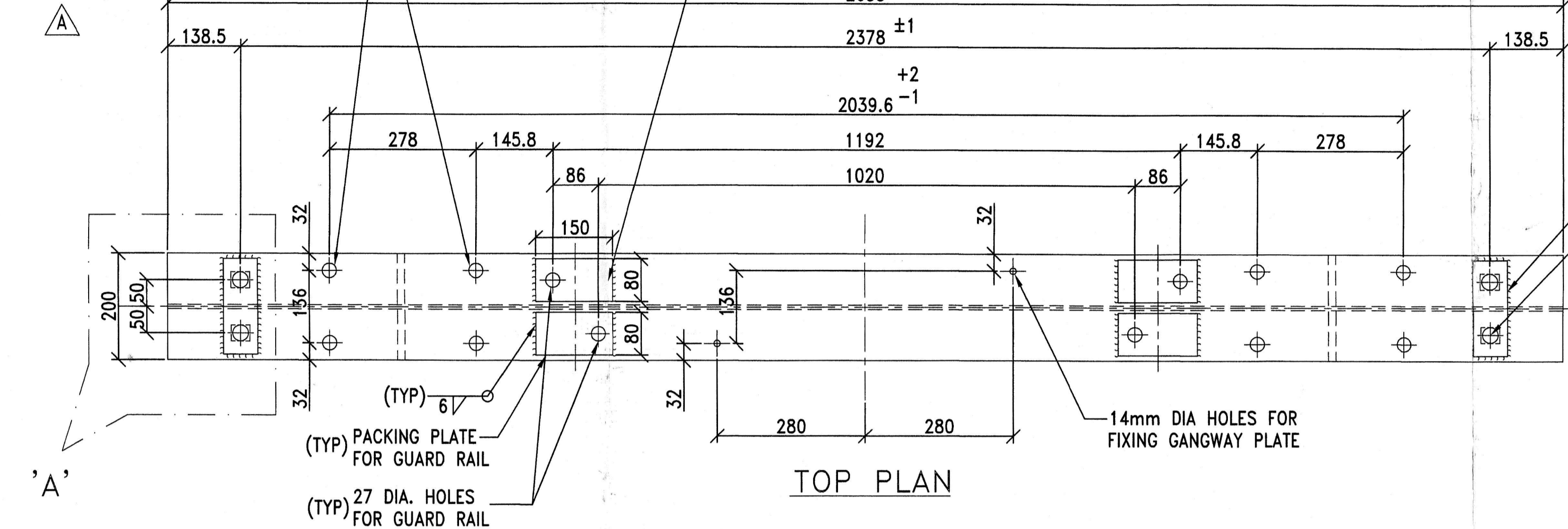


Annexure-A

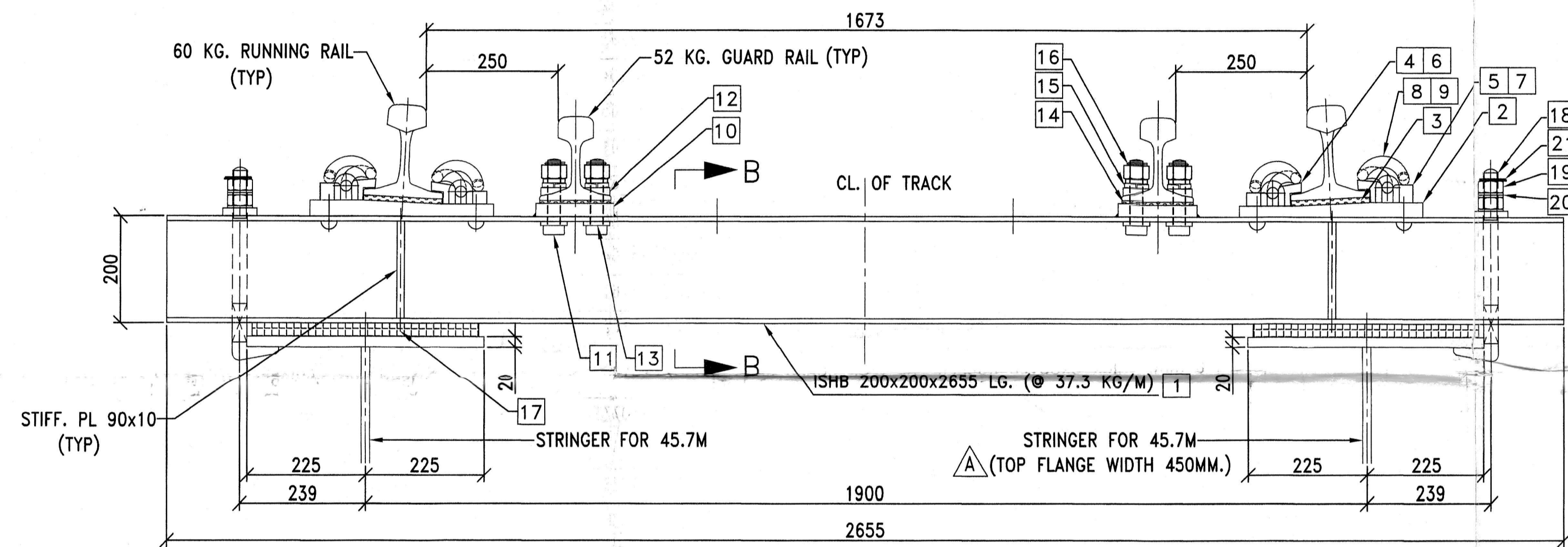
Sl. No.	Description	Drawing No.	Qty.	Unit
1	H-Beam Sleeper		25	Sets
2	Special Liner Type IIA (Inner)	RH-991	338	Nos.
3	Special Liner Type IIA (Outer)	RH-992	221	Nos.
4	ERC	T-3701	696	Nos.
5	Embedded Steel Plate 10mm	RH-1154	1180	Nos.
6	Taper Washer	T-5161	150	Nos.
7	Taper Washer	T-5162	150	Nos.
8	Guard Rail Bolts & Nuts	T-5164	344	Nos.
9	Tapered Split Pin	-	2600	Nos.
10	Single Coil Spring Washer	10773	100	Nos.
11	Hook Bolt with Nut & Spring Washer	B-1636/5	140	Nos.
12	Elastomeric Pad	B-1636/6	70	Nos.
13	G. R. Pad 6mm	T-5163	1790	Nos.
14	Elastomeric Pad (17A) with notch cut to clear splice bolts as per approved drawing no. 2151/HBS/18.3/01		120	Nos.
15	Washer plate for Hook Bolts at splice location (item no. 22 of 18.3m span) - 145mm x 70mm x 36mm		120	Nos.
16	Extra: Spring washer/ Plain washer to fill-up the gap between nuts & split pin for effectiveness of split pin as shown in approved drawing no. 2151/HSB/18.3/01		1000	Nos.
17	Extra: 28mm dia Nut for Hook Bolt to fill-up the gap between nut & split pin		2000	Nos.

FOR RAIL FASTENING ASSEMBLY AS PER DRG. NO.- RDSO/B-1636/4 & RH.983 FOR 60 KG. RAIL & RH.1122 FOR 52 KG RUNNING RAIL(M/S RAHEE INDUSTRIES LTD, KOLKATA)

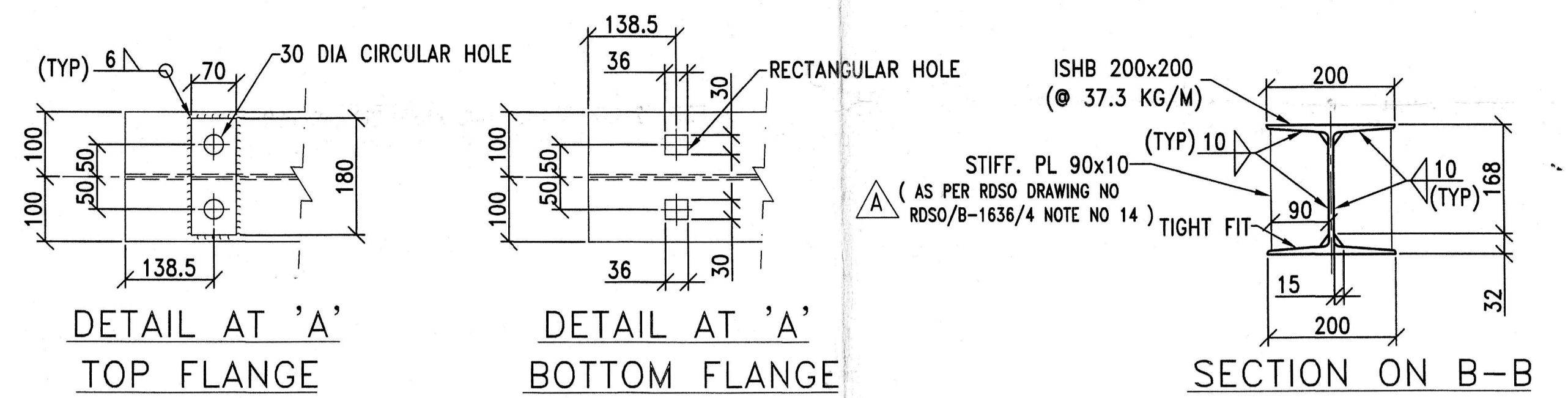
FOR 52 KG. GUARD RAIL ASSEMBLY AS PER DRG. NO.- RDSO/T-5155 TO RDSO/T-5164



TOP PLAN



ELEVATION



DETAIL AT 'A' TOP FLANGE

DETAIL AT 'A' BOTTOM FLANGE

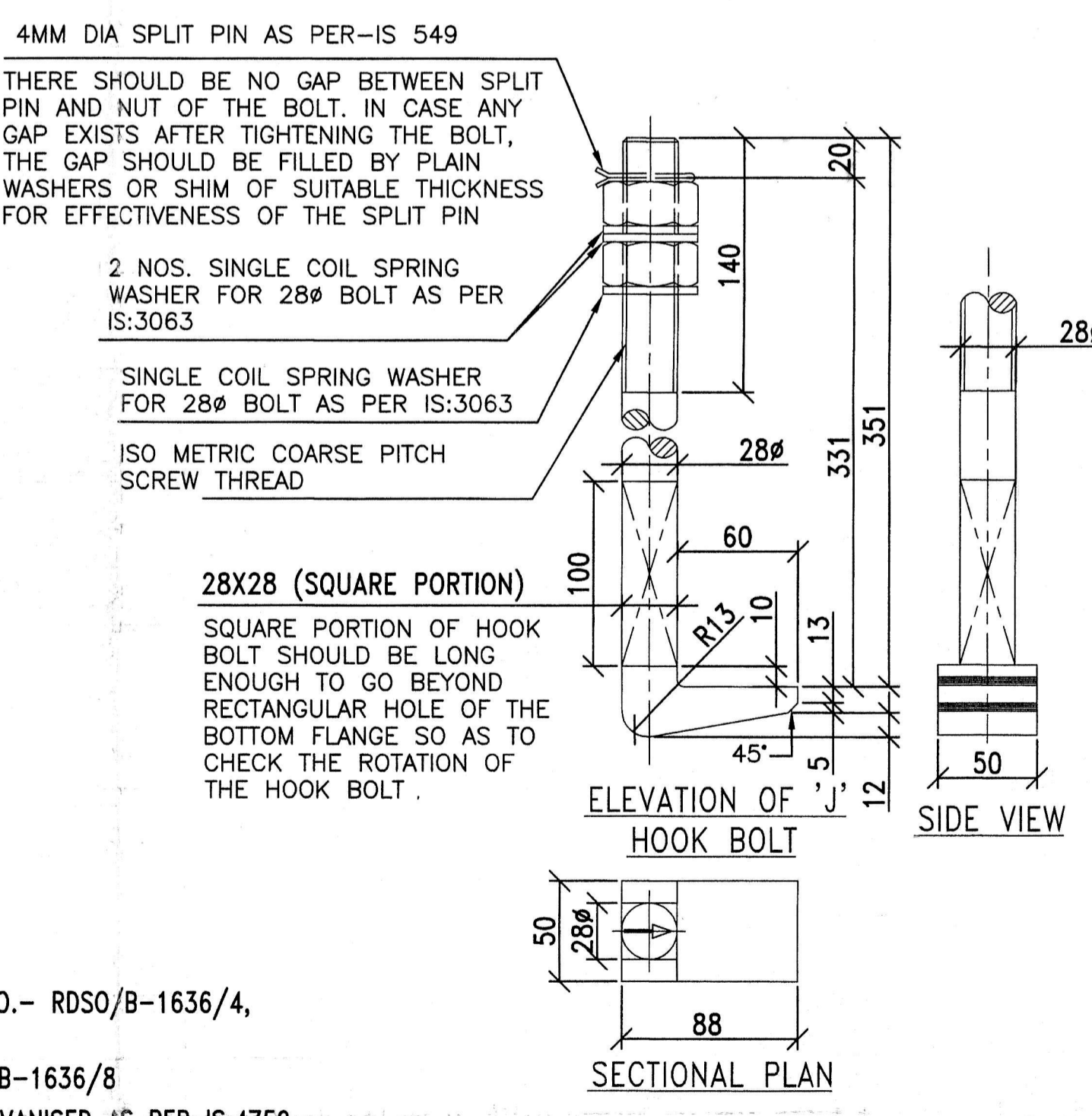
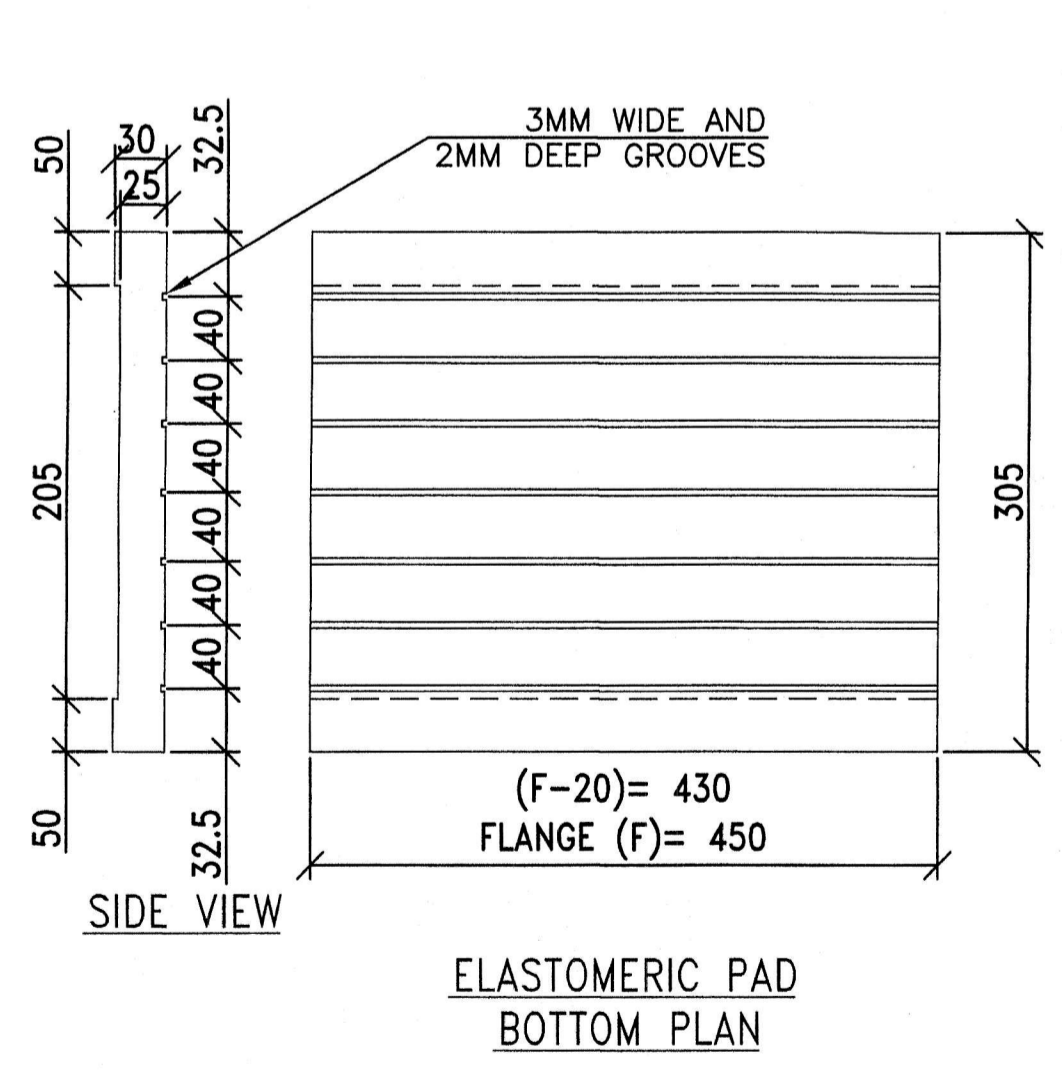
SECTION ON B-B

PLATE 180x70x10 THK.
28 DIA HOOK BOLT AS PER DRG. NO. RDSO/B-1636/5

ITEM REQUIREMENT FOR 1 SET H-BEAM SLEEPER

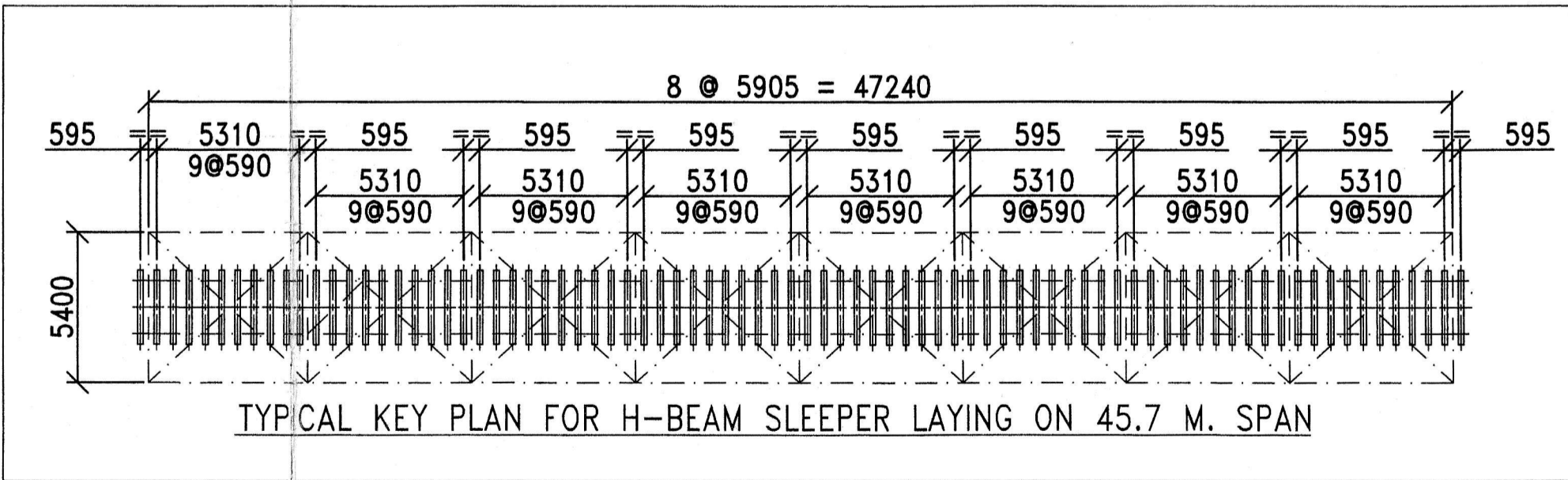
ITEM NO.	DESCRIPTION	DRAWING NUMBER	SPECIFICATION	QTY PER SLEEPER
1	H-BEAM STEEL SLEEPER 2655 M LENGTH	BASED ON RDSO/B-1636/4	IS:808/809 & IS:2062-2011 Gr. B	1
2	STEEL BASE PLATE	RDSO/T-8760	IS:2062-2011 Gr. B	2
3	RAIL PAD WITH EMBEDDED STEEL PLATE	RDSO/T-8761	IRS FOR 12 mm. THICK GROOVED RUBBER PAD (PROVISIONAL)	2
4	SPECIAL CAST LINER (INNER) FOR 60 kg. (UIC) RAIL	RDSO/T-8762	IRS SPECIFICATION FOR SPECIAL CAST LINER (PROVISIONAL-2019)	2
5	SPECIAL CAST LINER (OUTER) FOR 60 kg. (UIC) RAIL	RDSO/T-8763		2
6	SPECIAL CAST LINER (INNER) FOR 52 kg. RAIL	RDSO/T-8764		2
7	SPECIAL CAST LINER (OUTER) FOR 52 kg. RAIL	RDSO/T-8765		2
8	ELASTIC RAIL CLIP MKIII	RDSO/T-3701	I.R.S. T-31-1992	4
9	ELASTIC RAIL CLIP FOR FISH PLATED JOINTS (ERC-J)	RDSO/T-4158	I.R.S. T-31-1992	4
10	PACKING PLATE 80x150x22 (FOR GUARD RAIL)	RDSO/T-5155 TO RDSO/T-5164	IS:2062-1999 GR. B	4
11	BOLT AND NUT (FOR GUARD RAIL)	RDSO/T-5164	IRS T-23	4
12	TAPER WASHER (FOR 52 kg. GUARD RAIL)	RDSO/T-5161	IS:2062-1999 GR. B	4
13	TAPER STEEL WASHER (FOR GUARD RAIL)	RDSO/T-5162	IS:2062-1999 GR. B	4
14	6 mm. THICK GROOVED RUBBER PAD (FOR GUARD RAIL)	RDSO/T-5164	IRS Specification for 6 mm. Thick GR. Pad (Provisional-1997)	2
15	SINGLE COIL SPRING WASHER (FOR GUARD RAIL)	RDSO/T-10773	IRS T-42-1988	4
16	TAPERED SPLIT PIN FOR GUARD RAIL	SUITABLE	SUITABLE	4
17	ELASTOMERIC PAD 450x305x30/25	RDSO/B-1636/5	RDSO/M & C/RP-197/03	2
18	28 HOOK BOLT x 381 lg.	RDSO/B-1636/5		4
19	NUT FOR 28 HOOK BOLT	RDSO/B-1636/5		8
20	SINGLE COIL SPRING WASHER FOR 28 HOOK BOLT	RDSO/B-1636/5	IS:3063	12
21	TAPERED SPLIT PIN FOR HOOK BOLT	RDSO/B-1636/5	SUITABLE	4

* ITEM 6 & 7 TO BE USED FOR 52 KG. RAIL.
* ITEM 9 TO BE USED WHERE FISH PLATED JOINTS ARE REQUIRED.



SECTIONAL PLAN

82 SETS H-BEAM SLEEPER REQUIRED PER SPAN



TYPICAL KEY PLAN FOR H-BEAM SLEEPER LAYING ON 45.7 M. SPAN

- NOTES:-
1. ALL DIMENSION ARE IN MILLIMETERS.
 2. THIS DRAWING IS DONE ON THE BASIS OF RDSO'S DRAWING NO.- RDSO/B-1636/4, RDSO/B-1636/5, RDSO/B-1636/8
 3. FOR GENERAL NOTES REFER TO RDSO'S DRAWING NO.- RDSO/B-1636/8
 4. H-BEAM SLEEPER AND ALL FITTING ITEMS TO BE HOT DIP GALVANISED #5 PER IS:4759



SIGNATURE & DATE
SIGNATURE & DATE
SIGNATURE & DATE
SIGNATURE & DATE

THE BRAITHWAITE BURN AND JESSOP CONSTRUCTION COMPANY LIMITED
(A GOVT. OF INDIA ENTERPRISE)

CLIENT: **SOUTH WESTERN RAILWAY**
PROJECT: 25 Ton. AXLE LOADING STANDARD-2008 (12+4)x45.7 M. SPAN OPEN WEB WELDED THROUGH TYPE GIRDER FOR BR.NO.-125 & 184 LONDA-MIRAJ DOUBLING PROJECT

TITLE: **H-BEAM STEEL SLEEPER FOR 60 KG. RUNNING RAIL AND 52 KG. GUARD RAIL FOR 45.7M SPAN**

SCALE:- 1:10 NAME DATE B.B.J. ORDER NO.- 2153
DRAWN BY: R. BOSE 15.10.19 DRG. NO. 2153/HBS/45.7M/01 REV. A
CHECKED BY: A.K.SAHA 15.10.19
APPROVED BY: SHEET: A2

REV.	DATE	DESCRIPTION	BY
A	10.02.20	REVISED AS MKD. AS PER S.W.RLY'S COMMENTS	A.K.SETHI
REVISIONS			