

10/20/6112 ON DIMENSIONS

TYP. DETAIL AT SPLICE POSITION

RAFTER PLAN FOR END TRUSSES

RAFTER PLAN FOR END TRUSSES

RAFTER PLAN FOR END TRUSSES

RAFTER PLAN FOR END TRUSSES

RAFTER PLAN FOR END TRUSSES

RAFTER PLAN FOR END TRUSSES

RAFTER PLAN FOR END TRUSSES

RAFTER PLAN FOR END TRUSSES

RAFTER PLAN FOR END TRUSSES

RAFTER PLAN FOR END TRUSSES

RAFTER PLAN FOR END TRUSSES

RAFTER PLAN FOR END TRUSSES

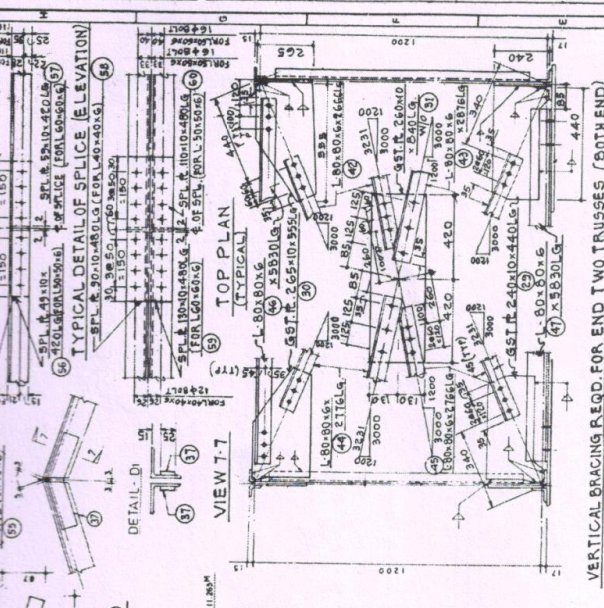
RAFTER PLAN FOR END TRUSSES

RAFTER PLAN FOR END TRUSSES

RAFTER PLAN FOR END TRUSSES

RAFTER PLAN FOR END TRUSSES

RAFTER PLAN FOR END TRUSSES



VIEW 5-5

VERTICAL BRACING REQD. FOR END TWO TRUSSES (BOTH END)

RAFTER BRACING (CRB)

TIE BRACING

GABLE BRACING

TIE BRACING

TIE BRACING

TIE BRACING

TIE BRACING

TIE BRACING

TIE BRACING

TIE BRACING

TIE BRACING

TIE BRACING

TIE BRACING

TIE BRACING

TIE BRACING

TIE BRACING

TIE BRACING

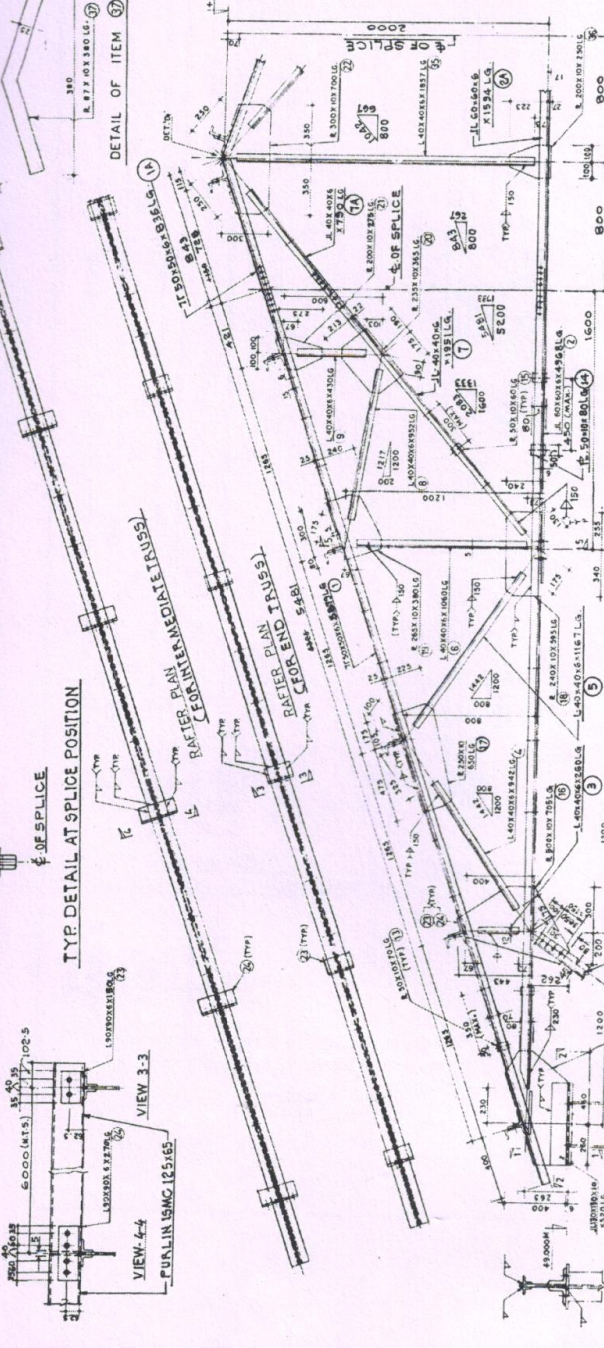
TIE BRACING

TIE BRACING

TIE BRACING

TIE BRACING

TIE BRACING



11-NOG. TRUSS REQUIRED THUS

NO TRUSS REQD WHO 1-AS DRN & NOTED
 WHO 2-AS DRN & NOTED
 WHO 3-AS DRN & NOTED
 WHO 4-AS DRN & NOTED
 WHO 5-AS DRN & NOTED
 WHO 6-AS DRN & NOTED
 WHO 7-AS DRN & NOTED
 WHO 8-AS DRN & NOTED
 WHO 9-AS DRN & NOTED
 WHO 10-AS DRN & NOTED
 WHO 11-AS DRN & NOTED
 WHO 12-AS DRN & NOTED
 WHO 13-AS DRN & NOTED
 WHO 14-AS DRN & NOTED
 WHO 15-AS DRN & NOTED
 WHO 16-AS DRN & NOTED
 WHO 17-AS DRN & NOTED
 WHO 18-AS DRN & NOTED
 WHO 19-AS DRN & NOTED
 WHO 20-AS DRN & NOTED
 WHO 21-AS DRN & NOTED
 WHO 22-AS DRN & NOTED
 WHO 23-AS DRN & NOTED
 WHO 24-AS DRN & NOTED
 WHO 25-AS DRN & NOTED
 WHO 26-AS DRN & NOTED
 WHO 27-AS DRN & NOTED
 WHO 28-AS DRN & NOTED
 WHO 29-AS DRN & NOTED
 WHO 30-AS DRN & NOTED
 WHO 31-AS DRN & NOTED
 WHO 32-AS DRN & NOTED
 WHO 33-AS DRN & NOTED
 WHO 34-AS DRN & NOTED
 WHO 35-AS DRN & NOTED
 WHO 36-AS DRN & NOTED
 WHO 37-AS DRN & NOTED
 WHO 38-AS DRN & NOTED
 WHO 39-AS DRN & NOTED
 WHO 40-AS DRN & NOTED
 WHO 41-AS DRN & NOTED
 WHO 42-AS DRN & NOTED
 WHO 43-AS DRN & NOTED
 WHO 44-AS DRN & NOTED
 WHO 45-AS DRN & NOTED
 WHO 46-AS DRN & NOTED
 WHO 47-AS DRN & NOTED
 WHO 48-AS DRN & NOTED
 WHO 49-AS DRN & NOTED
 WHO 50-AS DRN & NOTED
 WHO 51-AS DRN & NOTED
 WHO 52-AS DRN & NOTED
 WHO 53-AS DRN & NOTED
 WHO 54-AS DRN & NOTED
 WHO 55-AS DRN & NOTED
 WHO 56-AS DRN & NOTED
 WHO 57-AS DRN & NOTED
 WHO 58-AS DRN & NOTED
 WHO 59-AS DRN & NOTED
 WHO 60-AS DRN & NOTED
 WHO 61-AS DRN & NOTED
 WHO 62-AS DRN & NOTED
 WHO 63-AS DRN & NOTED
 WHO 64-AS DRN & NOTED
 WHO 65-AS DRN & NOTED
 WHO 66-AS DRN & NOTED
 WHO 67-AS DRN & NOTED
 WHO 68-AS DRN & NOTED
 WHO 69-AS DRN & NOTED
 WHO 70-AS DRN & NOTED
 WHO 71-AS DRN & NOTED
 WHO 72-AS DRN & NOTED
 WHO 73-AS DRN & NOTED
 WHO 74-AS DRN & NOTED
 WHO 75-AS DRN & NOTED
 WHO 76-AS DRN & NOTED
 WHO 77-AS DRN & NOTED
 WHO 78-AS DRN & NOTED
 WHO 79-AS DRN & NOTED
 WHO 80-AS DRN & NOTED
 WHO 81-AS DRN & NOTED
 WHO 82-AS DRN & NOTED
 WHO 83-AS DRN & NOTED
 WHO 84-AS DRN & NOTED
 WHO 85-AS DRN & NOTED
 WHO 86-AS DRN & NOTED
 WHO 87-AS DRN & NOTED
 WHO 88-AS DRN & NOTED
 WHO 89-AS DRN & NOTED
 WHO 90-AS DRN & NOTED
 WHO 91-AS DRN & NOTED
 WHO 92-AS DRN & NOTED
 WHO 93-AS DRN & NOTED
 WHO 94-AS DRN & NOTED
 WHO 95-AS DRN & NOTED
 WHO 96-AS DRN & NOTED
 WHO 97-AS DRN & NOTED
 WHO 98-AS DRN & NOTED
 WHO 99-AS DRN & NOTED
 WHO 100-AS DRN & NOTED

NOTES FOR SHOP:

- a) ALL BOLTS TO BE 16mm UNLESS NOTED OTHERWISE
- b) ALL WELDS TO BE FULL PENETRATION UNLESS NOTED OTHERWISE
- c) ALL DIMENSIONS ARE TO FACE UNLESS NOTED OTHERWISE
- d) ALL DIMENSIONS ARE TO FACE UNLESS NOTED OTHERWISE
- e) ALL DIMENSIONS ARE TO FACE UNLESS NOTED OTHERWISE
- f) ALL DIMENSIONS ARE TO FACE UNLESS NOTED OTHERWISE
- g) ALL DIMENSIONS ARE TO FACE UNLESS NOTED OTHERWISE
- h) ALL DIMENSIONS ARE TO FACE UNLESS NOTED OTHERWISE
- i) ALL DIMENSIONS ARE TO FACE UNLESS NOTED OTHERWISE
- j) ALL DIMENSIONS ARE TO FACE UNLESS NOTED OTHERWISE
- k) ALL DIMENSIONS ARE TO FACE UNLESS NOTED OTHERWISE
- l) ALL DIMENSIONS ARE TO FACE UNLESS NOTED OTHERWISE
- m) ALL DIMENSIONS ARE TO FACE UNLESS NOTED OTHERWISE
- n) ALL DIMENSIONS ARE TO FACE UNLESS NOTED OTHERWISE
- o) ALL DIMENSIONS ARE TO FACE UNLESS NOTED OTHERWISE
- p) ALL DIMENSIONS ARE TO FACE UNLESS NOTED OTHERWISE
- q) ALL DIMENSIONS ARE TO FACE UNLESS NOTED OTHERWISE
- r) ALL DIMENSIONS ARE TO FACE UNLESS NOTED OTHERWISE
- s) ALL DIMENSIONS ARE TO FACE UNLESS NOTED OTHERWISE
- t) ALL DIMENSIONS ARE TO FACE UNLESS NOTED OTHERWISE
- u) ALL DIMENSIONS ARE TO FACE UNLESS NOTED OTHERWISE
- v) ALL DIMENSIONS ARE TO FACE UNLESS NOTED OTHERWISE
- w) ALL DIMENSIONS ARE TO FACE UNLESS NOTED OTHERWISE
- x) ALL DIMENSIONS ARE TO FACE UNLESS NOTED OTHERWISE
- y) ALL DIMENSIONS ARE TO FACE UNLESS NOTED OTHERWISE
- z) ALL DIMENSIONS ARE TO FACE UNLESS NOTED OTHERWISE

SPECIAL NOTE :-

L 65x65x6 AND L 75x75x6
 CAN BE USED IN PLACE OF
 L 60x60x6 AND L 80x80x6
 RESPECTIVELY AS PER
 AVAILABILITY OF MATERIAL

KEY PLAN OF ROOF TRUSS BRACINGS 2-NOS RAFTER BRG REQD MKD RB1 AS DRN
 17 MKD RB2 OPP HAND

DETAIL OF TRUSSES AND
 RAFTER BRACINGS

- NOTES :-
1. ALL HOLES ARE 17.5mm UNLESS NOTED OTHERWISE
 2. WELD LENGTH AND SIZE OF GUSSET PLATES HAS NOT BEEN SPECIFIED IN THE DRAWING. THESE WILL HAVE TO BE WORKED OUT AT THE TIME OF FABRICATION DEPENDING UPON THE SIZE OF WELD USED.
 3. FOR GENERAL NOTES ARRANGEMENT & MARKING REF. DRG. NO. 01.
 4. PART MARK FOR ERECTION MARK SHOWN AS 12, ETC. & TO BE READ AS RB1/LRB/1/2, ETC.

DRAWING NO. 2119/02/01

mpe wiley