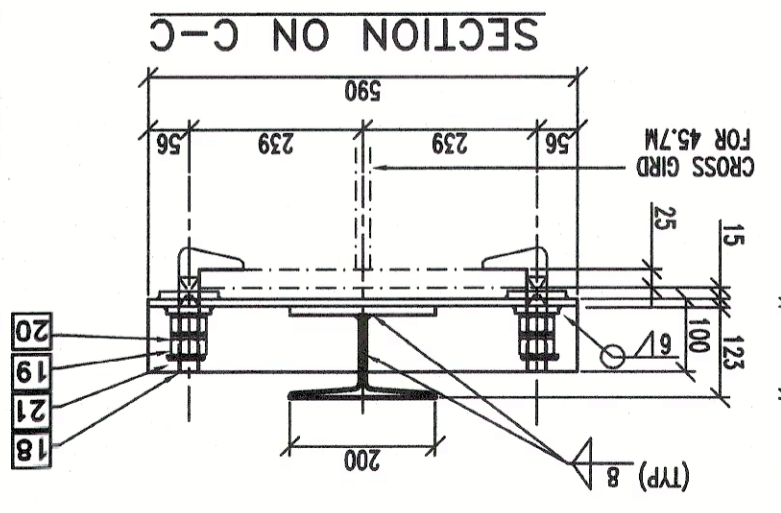
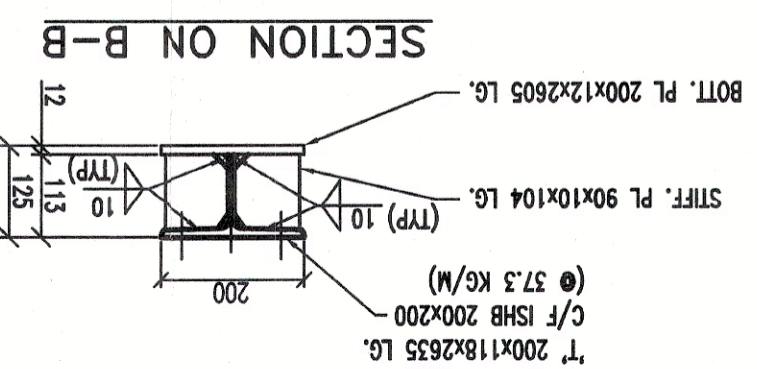
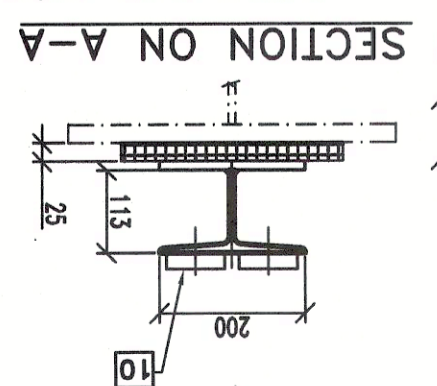
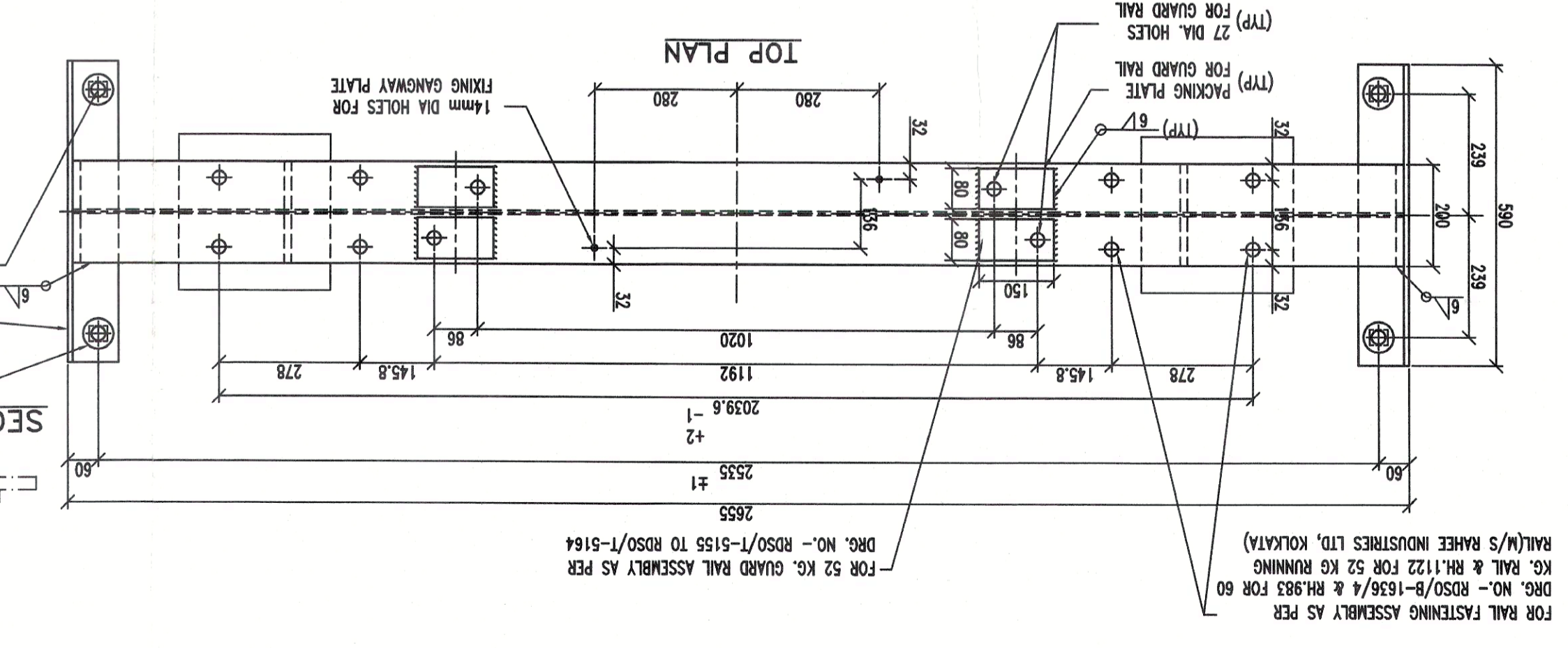
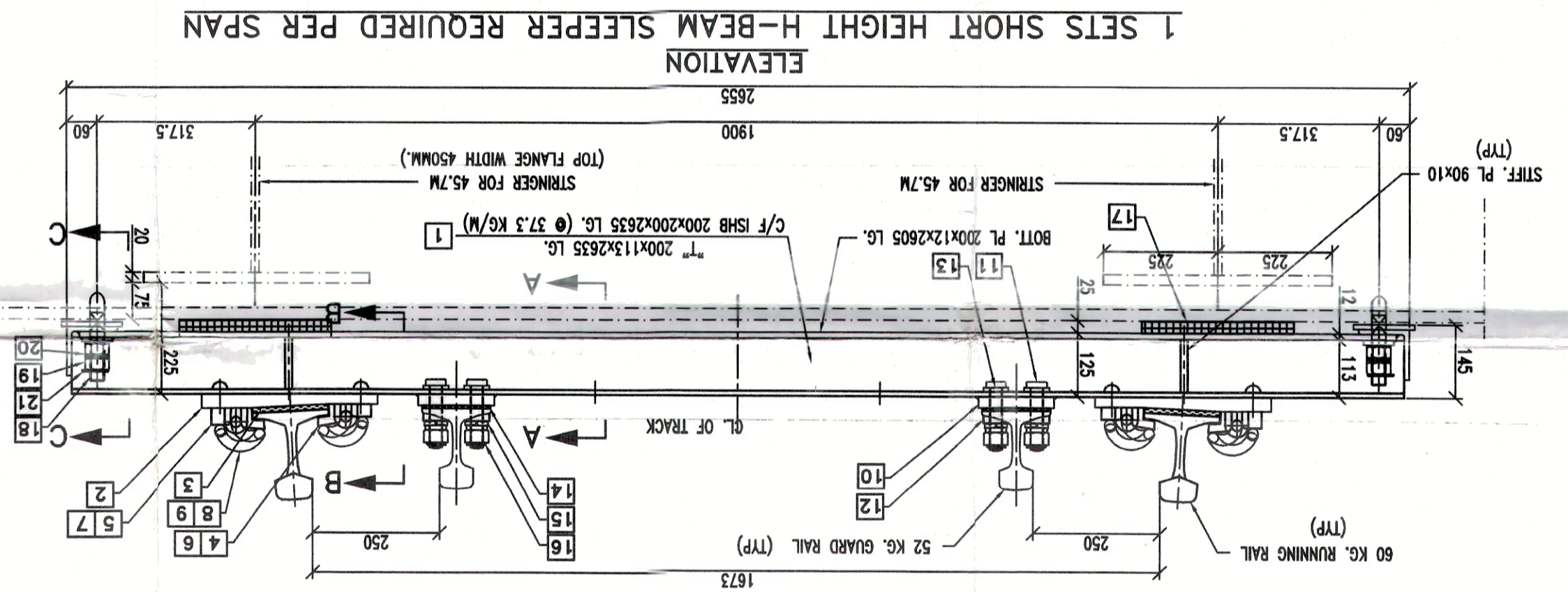
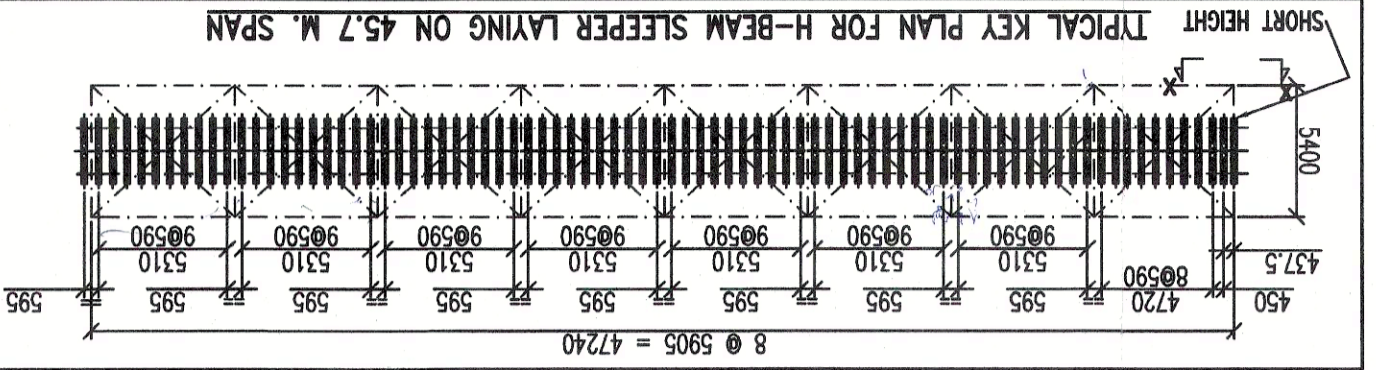
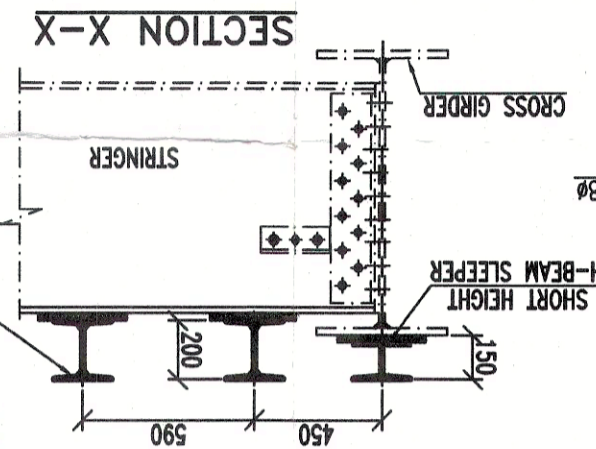
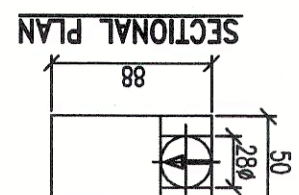
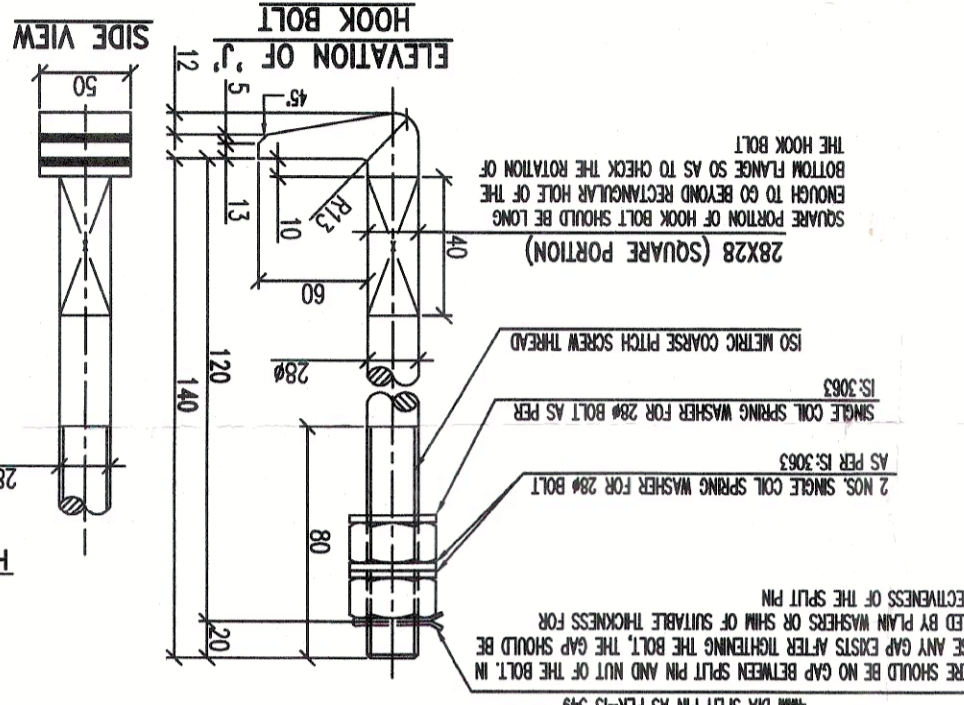
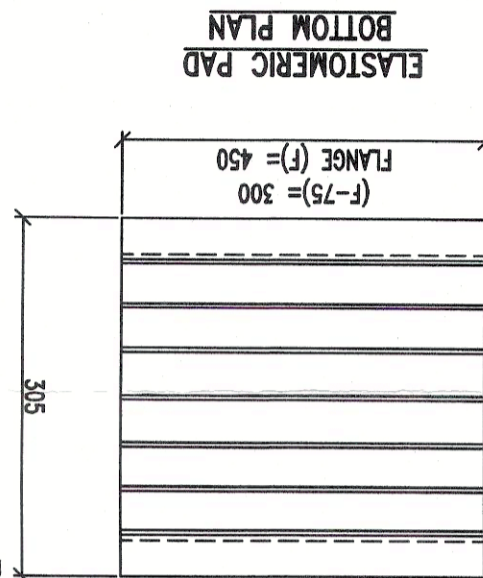
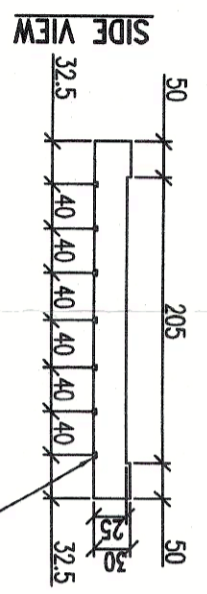




- NOTES:-
1. ALL DIMENSION ARE IN MILLIMETERS.
  2. THIS DRAWING IS DONE ON THE BASIS OF RDSO'S DRAWING NO.- RDSO/B-1636/4.
  3. FOR GENERAL NOTES REFER TO RDSO'S DRAWING NO.- RDSO/B-1636/8
  4. H-BEAM SLEEPER AND ALL FITTING ITEMS TO BE HOT DIP GALVANISED AS PER IS:4759



ITEM NO.	DESCRIPTION	DRAWING NUMBER	SPECIFICATION	QTY PER SLEEPER
1	H-BEAM STEEL SLEEPER 2655 M LENGTH (SHORT HEIGHT)	RDSO/T-8760	IS:2062-2011 Gr. B	1
2	STEEL BASE PLATE	RDSO/T-8760	IS:2062-2011 Gr. B	2
3	RAIL PAD WITH EMBEDDED STEEL PLATE	RDSO/T-8761	IRS FOR 12 mm. THICK GROOVED RUBBER PAD (PROVISIONAL)	2
4	SPECIAL CAST LINER (INNER) FOR 60 kg. (UC) RAIL	RDSO/T-8762	RDSO/T-8762	2
5	SPECIAL CAST LINER (OUTER) FOR 60 kg. (UC) RAIL	RDSO/T-8763	RDSO/T-8763	2
6	SPECIAL CAST LINER (INNER) FOR 52 kg. RAIL	RDSO/T-8764	RDSO/T-8764	2
7	SPECIAL CAST LINER (OUTER) FOR 52 kg. RAIL	RDSO/T-8765	RDSO/T-8765	2
8	ELASTIC RAIL CLIP WKIII	RDSO/T-3701	I.R.S. T-31-1992	4
9	ELASTIC RAIL CLIP FOR FISH PLATED JOINTS (ERC-I)	RDSO/T-4158	I.R.S. T-31-1992	4
10	PACKING PLATE 80x150x22 (FOR GUARD RAIL)	RDSO/T-5164	IS:2062-1999 GR. B	4
11	BOLT AND NUT (FOR GUARD RAIL)	RDSO/T-5164	IRS T-23	4
12	TAPER WASHER (FOR 52 kg. GUARD RAIL)	RDSO/T-5164	IS:5372	4
13	TAPER STEEL WASHER (FOR GUARD RAIL)	RDSO/T-5162	IS:5372	4
14	6 mm. THICK GROOVED RUBBER PAD (FOR GUARD RAIL)	RDSO/T-5163	IRS Specification for 6 mm. Thick GR. Pad (Provisional-1997)	2
15	SINGLE COIL SPRING WASHER (FOR GUARD RAIL)	RDSO/T-10773	SUITABLE	4
16	TAPERED SPLIT PIN FOR GUARD RAIL	RDSO/B-1636/5	SUITABLE	4
17	ELASTOMERIC PAD 300x305x30/25	RDSO/B-1636/5	RDSO/M & C/RP-197/03	2
18	#28 HOOK BOLT x 170 Lg.	RDSO/B-1636/5	SUITABLE	4
19	NUT FOR #28 HOOK BOLT	RDSO/B-1636/5	SUITABLE	8
20	SINGLE COIL SPRING WASHER FOR #28 HOOK BOLT	RDSO/B-1636/5	IS:3063	12
21	TAPERED SPLIT PIN FOR HOOK BOLT	RDSO/B-1636/5	SUITABLE	4

ITEM REQUIREMENT FOR 1 SET SHORT HEIGHT H-BEAM SLEEPER

**THE BRAITHWAITE BURN AND JESSOP CONSTRUCTION COMPANY LIMITED**  
(A GOVT. OF INDIA ENTERPRISE)KOLKATA

CLIENT: SOUTH WESTERN RAILWAY  
PROJECT: 25 Ton. AXLE LOADING STANDARD-2008 (12+14)x45.7 M. SPAN OPEN WEB WELDED THROUGH TYPE GIRDER FOR BR.NO.-125 & 184 LONDA-MIRAJ DOUBLING PROJECT

TITLE: SHORT HEIGHT H-BEAM STEEL SLEEPER FOR 60 KG. RUNNING RAIL AND 52 KG. GUARD RAIL FOR 45.7M SPAN  
SCALE:- 1:10  
DATE: 03.12.20  
NAME: R. BOSE  
B.B.J. ORDER NO.- 2153

REV.	DRG. NO.	DATE	BY	DESCRIPTION
A2	2153/HBS/45.7M/02	05.12.20	A.K.SAHA	CHECKED BY:
			R. BOSE	DRAWN BY:

APPROVED BY: A.K.SAHA 05.12.20

SHEET: 11