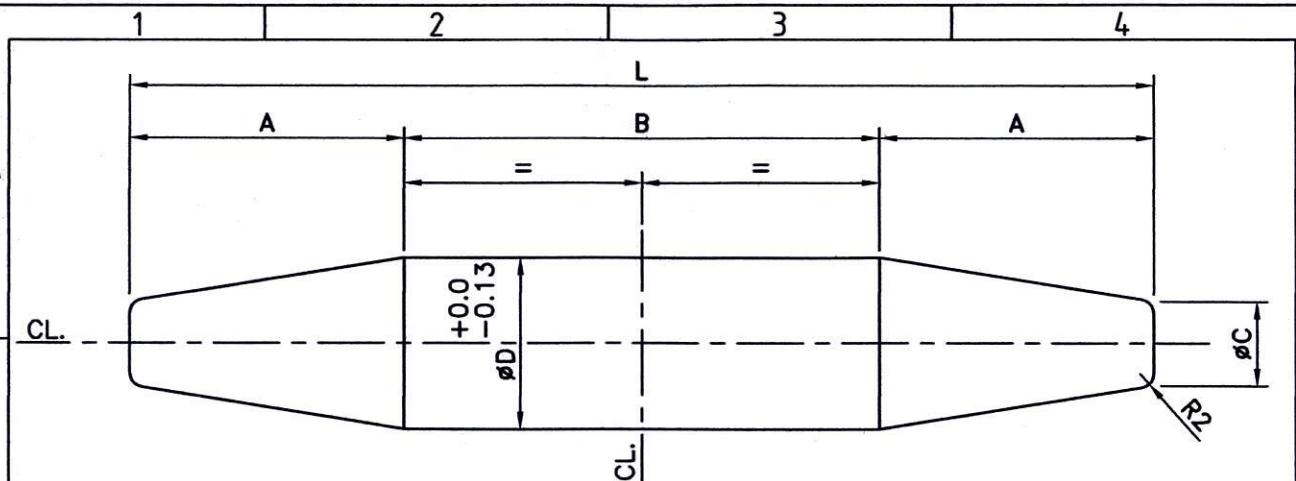


<b>Sl. No.</b>	<b>Particulars</b>	<b>Qty.</b>	<b>Unit</b>
<b>Item:</b>	<b>Parallel Barrel Drift</b>		
1	23.5mm Dia x 170mm Length	100.00	Nos.
2	23.5mm Dia x 149mm Length	100.00	Nos.
3	23.5mm Dia x 129mm Length	962.00	Nos.
4	21.5mm Dia x 116mm Length	112.00	Nos.
5	21.5mm Dia x 108mm Length	568.00	Nos.



**PARALLEL BARREL DRIFT**  
**GRADE: IRS M4 CLASS- IV**

TYPE	NOMINAL DIA. OF BOLTS (MM)	φ D (MM)	DIMENSION OF DRIFT				GRIP (MM)	NOS. REQUIRED
			A (MM)	B (MM)	φC(MM)	L (MM)		
1	22	23.5	35	100	12	170	76	100
2	22	23.5	35	79	12	149	52 TO 55	100
3	22	23.5	35	59	12	129	32 TO 35	962
<b>TOTAL=</b>								<b>1162</b>
4	20	21.5	32	52	11	116	26 TO 30	112
5	20	21.5	32	44	11	108	20 TO 22	568
<b>TOTAL=</b>								<b>680</b>

**NOTE:-**

- ALL DIMENSIONS ARE IN MM.
- THESE DRIFTS NOS. ARE BASED ON 50% OF SITE BOLTS/SPAN



**THE BRAITHWAITE BURN & JESSOP CONSTRUCTION COMPANY LIMITED, KOLKATA**

CLIENT: **SOUTH WESTERN RAILWAY**

PROJECT: **9x45.7M SPAN-25 TONNES LOADING-2008 STANDARD WELDED GIRDER GADAG-HOTGI DOUBLING PROJECT, KARNATAKA. BRIDGE NO.- 63D SOUTH WESTERN RAILWAY**

TITLE: **DETAILS OF DRIFT FOR ERECTION 45.7 M. SPAN**

SCALE:- 1:1	NAME	DATE	B.B.J. ORDER NO.- 3132	
DRAWN BY:	A.K.SETH	02.08.24	DRG. NO. <b>3132/45.7M/05</b>	REV. <b>1</b>
CHECKED BY:				<b>17.08.24</b>
APPROVED BY:			REQN. NO.-D/2404 DATE: 08.08.24	A4